

MONTHLY MEMBERSHIP PROGRESS REPORT

District 133

Results as of: 4/30/2026

GMT:

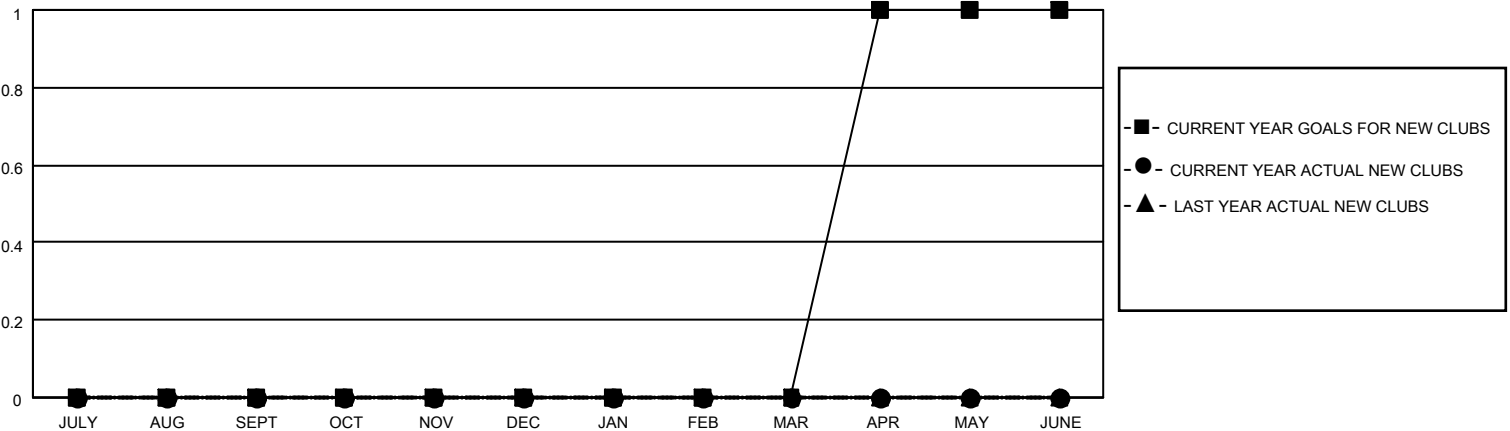
LOCATION REPUBLIC OF IRELAND

GMT CA

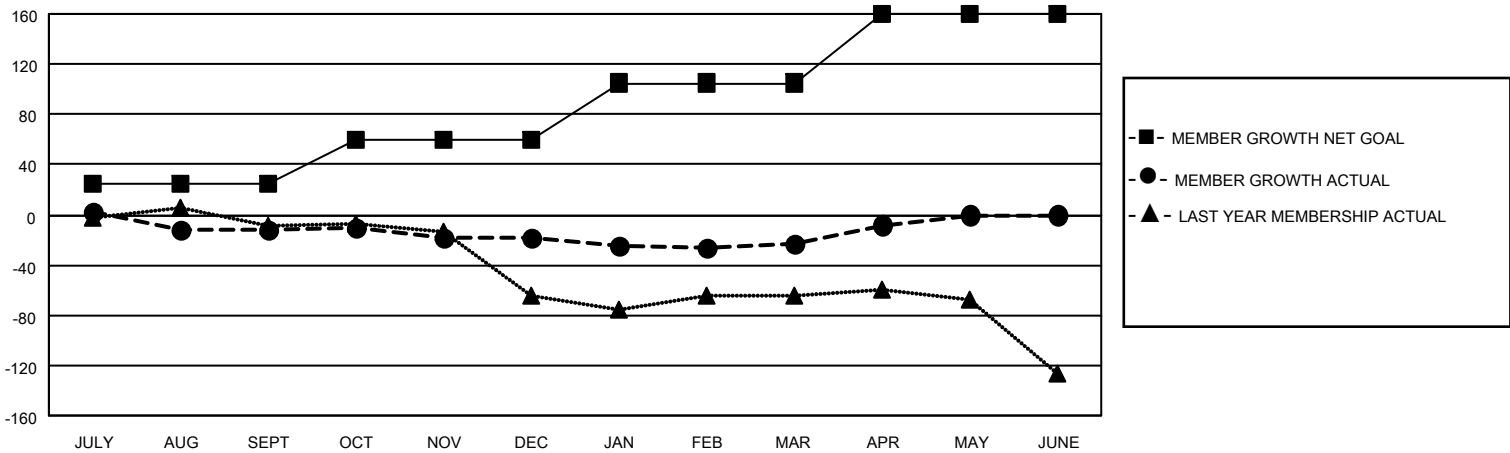
Clubs			
RESULTS FOR 2025-2026			
QUARTER	NEW CLUB GOAL	NEW CLUBS	DROPPED CLUBS
JULY/AUG/SEPT	0	0	0
OCT/NOV/DEC	0	0	0
JAN/FEB/MAR	0	0	0
APR/MAY/JUNE	1	0	0

Members			
RESULTS FOR 2025-2026			
QUARTER	MEMBER GROWTH NET GOAL	MEMBER GROWTH ACTUAL	DROPPED MEMBERS ACTUAL (including transfers)
JULY/AUG/SEPT	25	35	43
OCT/NOV/DEC	35	22	28
JAN/FEB/MAR	45	35	28
APR/MAY/JUNE	55	21	5

GOALS AND ACTUAL NEW CLUBS CUMULATIVE



GOALS AND ACTUAL MEMBERS CUMULATIVE



DROPPED CLUBS: 0	34 CLUBS OF 81 ADDED 1 OR MORE NEW MEMBERS	GENDER DISTRIBUTION MALE 1,309 (73.25%) FEMALE 478 (26.75%)
DROPPED MEMBERS DECEASED 13 CLUB CANCELLED 0 OTHER 91 TOTAL 104	CLICK HERE FOR CUMULATIVE MEMBERSHIP DATA	TOTAL FAMILY UNIT MEMBERS 50 FAMILY MEMBERS PAYING HALF DUES 25